



Data Logger LAN Stick Quick User Guide

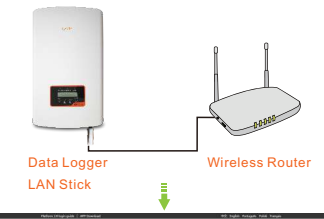
DLS Version: 1.3



- Delivery Content**
- 1 pc LAN Stick
 - 1 pc Data Logger LAN Stick Quick User Guide

Introduction

Data Logger LAN Stick is mainly used in inverters to realize simple and quick access to Internet. Users can easily check device information by logging in the monitoring center. The communication topology is as shown below:



Description of Symbols
To ensure normal use of the datalogger, before using the datalogger, be sure that:

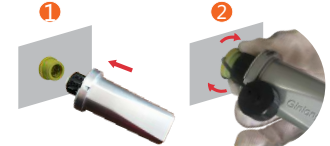
- The connected wireless router can normally access to Internet;
- The communication address of the inverter MUST BE "01", which is default value.
- A computer is connected to this device for parameter setting.

1 Electrical Connection

Connect LAN Stick to the corresponding interface on the inverter. Solis-1P5K-4G is used as an example in this manual. Please perform relevant operations as indicated below:



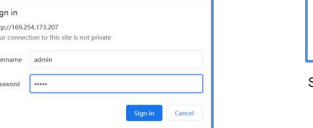
- Data Logger LAN Stick Installation**
1. Insert LAN Stick to COM port.
 2. Fasten the LAN Stick.



NOTES
LAN Stick automatically obtains IP by default. If the network cable supports automatically obtains IP, please jump to "3" for APP registration. If network cable do not support obtains IP automatically, please continue to follow "2" for IP settings.

2 LAN configuration

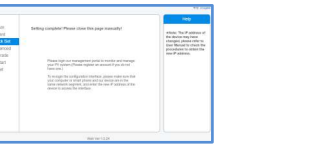
Step 1: Enter **169.254.173.207** in the web browser, open the following configuration interface. (If you can't open it, please skip to 3) Enter username **admin** and password **admin**.



Step 2: Select the "Quick Set". Enter IP address, Subnet mask, Gateway address, DNS server address for network cable. Then click the "Save". (Please enter 1 in the "Network name", otherwise it cannot be saved)

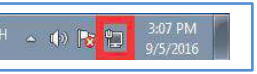


Step 3: The following interface pops up to indicate that the setting is successful, please skip to 4. Otherwise please try LAN configuration again.

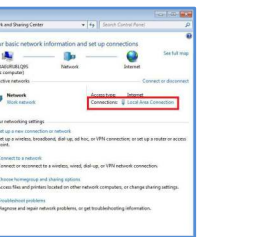


3 LAN configuration

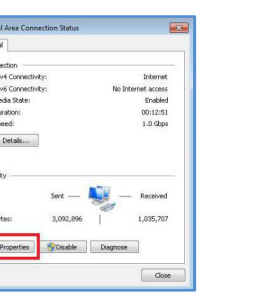
Step 1: With a network cable to connect the computer and LAN Stick, right-click the computer icon in the lower right corner of the computer, enter the network and sharing center.



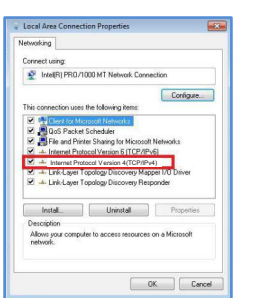
Step 2: Select the local connection options.



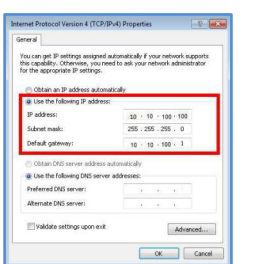
Step 3: Left double-click "Properties" into the "local connection status".



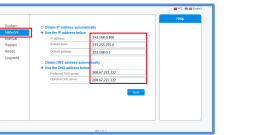
Step 4: Left double-click: "Internet Protocol version 4 (TCP / IpV4).



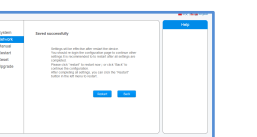
Step 5: While the computer's IP is configured as a static IP (as shown below).



Step 6: Enter 10.10.100.254 in the web browser, open the following configuration interface. Select the "Network".



Step 7: Enter IP address, Subnet mask, Default gateway, Preferred DNS server and Optional DNS server for network cable. Then click the "Save" and "Restart" to restart the LAN Stick.

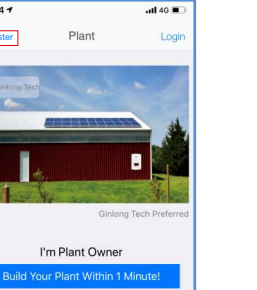


4 Create Solis monitoring account

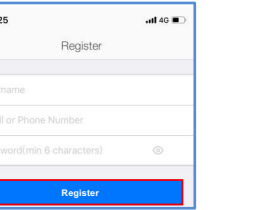
Step 1: Mobile phone scan the QR code to download the APP, or in the APP Store or Google Play search Solis Home or Solis Pro.



Step 2: Click on the "Register".

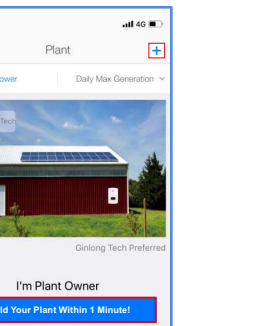


Step 3: Fill in the form as required and click the "Register".



5 Create plant

Step 1: In the APP homepage and click "Build Your Plant Within 1 Minute!" in the middle of the screen. Or click the "+" in the upper right corner.



Step 2: Enter the SN of the datalogger. The datalogger SN can be automatically scanned by placing the purchased device bar code in the scan box. If you can't scan, you can also manually enter the datalogger SN (just enter the digital serial number).

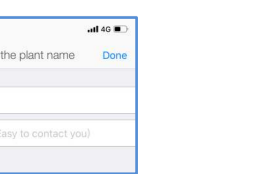


Note: Please scan the SN number on the datalogger, not the SN number on the inverter.



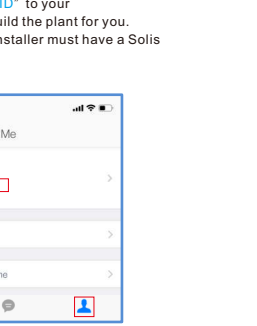
Note: Please scan the SN number on the datalogger, not the SN number on the inverter.

Step 3: Enter the plant name and contact information of the plant owner. Then click the "Done".



6 Distributor/Installer create plant

In order to easy registration and easy manage, you can also let the distributor/installer register the plant, then Link it to you. Click the "+" and tell the "ID" to your Distributor/installer to build the plant for you. (Note: your Distributor/installer must have a Solis Pro account)

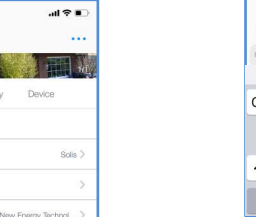


Step 2: Enter the plant information. Then click the "Next".



7 Link distributor/installer

Step 1: In order to easy manage to your plant. Select the plant and enter "Intro". Click the "Installer" or "distributor".



Step 2: Enter the company name of the installer or distributor. Then click the "Search".



Step 3: Click the [Bind Distributor/Installer] and the plant will appear in your installer/distributor monitoring interface. (Note: your installer/distributor must have a Solis Pro account to appear in the search list)



Contact
If you have any technical questions about our products, please contact us. Before contacting us, please confirm the following items:

- Equipment model
- Serial number of the datalogger
- Problem description
- Screenshot of the Status page in the configuration interface

Ginlong Technologies Co., Ltd.
No. 57 Jintong Road, Binhai Industrial Park, Xiangshan, Ningbo, Zhejiang, 315712, P.R.China.
Tel: +86 (0)574 6578 1806
Fax: +86 (0)574 6578 1606
Email : info@ginlong.com
Web : www.ginlong.com